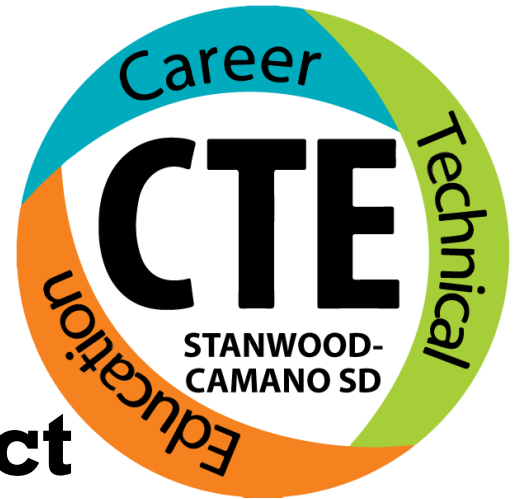


**Stanwood-
Camano
School District**



2022-2023

**Career &
Technical Education**

**Pathways
Guide**





WHAT IS CAREER & TECHNICAL EDUCATION?

Hands-on learning, real-life skills and career exploration. Career and Technical Education (CTE - formerly referred to as vocational education) prepares students for life and a career after high school. Apprenticeships, technical schools, community colleges, military or four-year universities are options that can be explored in our courses. Science, technology, engineering, and mathematics (STEM) concepts are taught in many of our CTE courses and include a blend of academic, technical and trade skills. Many CTE courses offer college credit through CTE Dual Credit programs.

CAREER CONNECTED LEARNING

CREATE AND MAKE

HANDS ON TRAINING

LEADERSHIP DEVELOPMENT

OPTIONS FOR CAREERS AND COLLEGE

REAL WORLD SKILLS

STEM PROJECTS VOCATIONAL TRADES

STANWOOD-CAMANO SCHOOL DISTRICT CTE PROGRAM AREAS:

AGRICULTURE EDUCATION

AMERICAN SIGN LANGUAGE (ASL)

BUSINESS & MARKETING EDUCATION

FAMILY & CONSUMER SCIENCES/ CULINARY ARTS

FIRE SERVICE TECHNOLOGY

HEALTH SCIENCES

ENGINEERING & DESIGN

WOODWORKING & CONSTRUCTION

VISUAL COMMUNICATIONS

WORK SITE LEARNING

WHAT IS OUR VISION & MISSION?

Students leave the Stanwood CTE Programs with marketable employability skills and levels of academic qualifications which allow them to choose among high-demand careers or pursue additional education/ training.

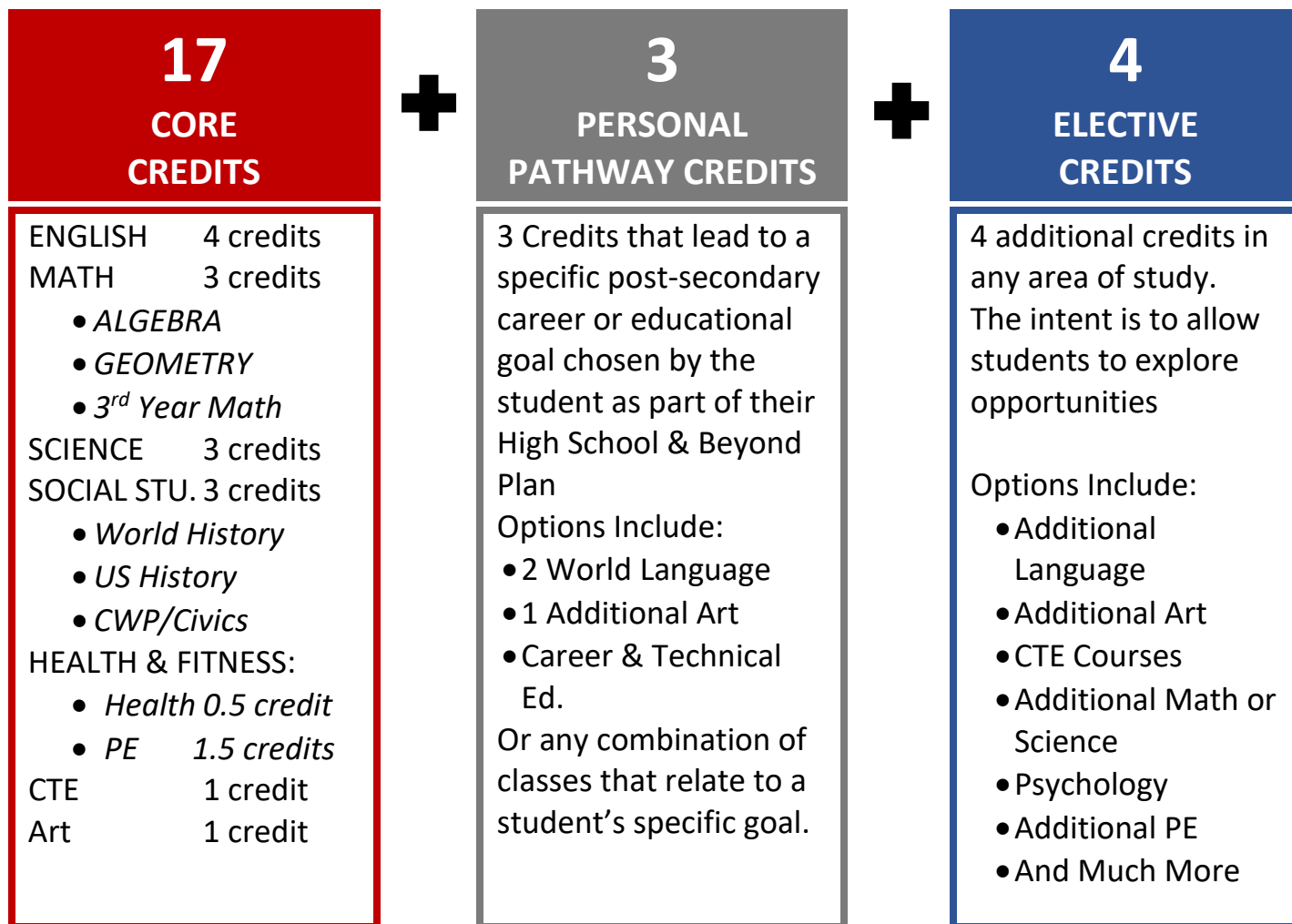
Our CTE mission is to prepare all learners for successful roles in families, careers and communities.

CTE courses provide a variety of opportunities for students to explore their career interests while developing academic, technical, leadership, and practical skills in areas that are highly relevant to students and highly valued by employers and colleges in our region. In addition, CTE courses provide students:

- 21st Century Skill training
- Access to State of the Art Technologies
- Real World Projects and Activities
- Student Leadership Clubs including [FBLA](#), [TSA](#), [FFA](#), [SkillsUSA](#), and [Sports Medicine Association](#)
- Skill Competitions at the local, regional, state, and national levels
- Career and College Exploration and Connections
- Opportunities for Innovation and Creativity

24 CREDITS

CAREER-AND-COLLEGE READY GRADUATION REQUIREMENTS



COURSE EQUIVALENCY

The current rule change to WAC 180-51-067 allows school districts to grant equivalency credit for courses offered in high schools. Students who take a CTE-equivalency course may satisfy graduation requirements in other content areas while earning 1.0 credit for a yearlong course or 0.5 credit for a semester course. For a list of current approved course equivalencies, please visit the CTE section of the Stanwood-Camano School District website at <https://cte.stanwood.wednet.edu/>. Career and Technical Education equivalencies are noted in the CTE program sections in this handbook.

Check with your high school counselor or college admission offices to make sure the course will be accepted for admission purposes. NCAA Requirements: Potential D1 or D2 athletes should check with their counselors annually regarding which equivalency credits have been approved by the NCAA.

CAREER AND TECHNICAL EDUCATION GRADUATION PATHWAYS

Recent changes in state graduation requirements provides students the option to meet state Math and English/ Language Arts testing requirements by completing a two credit sequence in an approved CTE program area that provides opportunities to earn college credit and /or an approved industry recognized certification and lead directly to employment or an articulated college or apprenticeship program.

Coursework must equal two credits with the CTE program area and ONE of the courses must have the Dual Credit or approved industry certification designation. (*) The CTE pathway must be reflected in the student's High School and Beyond Plan. To complete a CTE Sequence of Courses to meet the Graduation Pathway Requirement, students may select at least 2 credits from the list courses in the pathway that aligns to their High School & Beyond Plan.

Agriculture Education Program

Animal Systems Sequence:

Animal Science 🌱

Veterinary Science* 🌱

Plant Systems Sequence:

Horticulture* 🌱

Floriculture & Greenhouse

Landscape & Nursery Pro. 🌱

Natural Resource Systems Sequence:

Natural Resources 🌱

Power, Structural & Tech. Systems Sequence:

Mech Tech *1 🏠

Mech Tech 2* 🌱🏠

American Sign Language Program Sequence

American Sign Language (ASL) 1 🗣️

American Sign Language (ASL) 2* 🗣️

Business & Marketing Program

Business & Marketing Sequence:

Intro to Business (.5 Credit)* 🏠

Intro to Marketing (.5 Credit)

Law & Justice

Accounting* 🌱🏠

Personal Finance* 🌱🏠

Business English 📝

Microsoft Academy* ⭐

Visual Communications & Technology Sequence:

Digital Design* 🌱⭐

Multimedia 1* 🌱⭐

Multimedia 2* 🌱⭐

Game Design/ Computer Programming* ⭐

Advanced Computer Programming* ⭐

Leadership Sequence:

Leadership 1

Leadership 2

Leadership 3

Leadership 4

Core Plus Manufacturing Program Sequence

Core Plus 1 (LHHS)* 🌱⭐

Core Plus 2 (LHHS)* 🌱⭐

Construction & Woodworking Program Sequence

Beginning Woodworking

Woodworking*

Construction Geometry

RAP Construction* 🌱🏠⭐ (3 credits)

Culinary Arts Program Sequence

Intro to Culinary Arts* ⭐

Advanced Culinary Arts* ⭐

Fire Service Program Sequence

Fire Service 1* 🌱🏠⭐ (3 credits)

Fire Service 2* 🏠⭐ (3 credits)

Health Sciences Program Sequence

Introduction to Health Sciences

Sports Medicine 2

Sports Medicine Practicum

Medical Terminology* 🏠🌱

Photography & Publication Program Sequence

Photography 1* 🌱⭐

Photography 2* 🌱⭐

Yearbook 🌱

STEM Sequence

Engineering Design 1* 🌱🏠

Engineering Design 2* 🏠

CAD/CAM* 🌱🏠⭐

Robotics 🌱

SYMBOL KEY:

🌱 Fine Art Credit Available

📝 Sr. English Credit Available

🌱 Science Credit Available

🗣️ World Language Credit Available

⭐ Industry Certification Available

🌱 3rd Year Math Credit Available

🏠 College Credit Available

CTE DUAL CREDIT

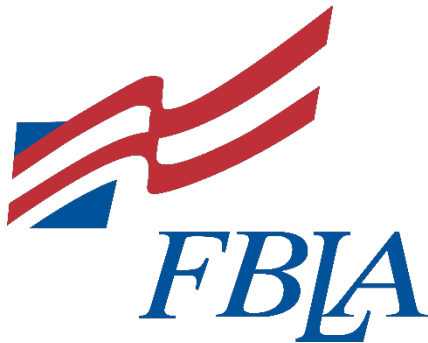
Many of the courses offered by the Stanwood-Camano Career & Technical Education Program offer CTE Dual Credit. For no or limited cost to the student, these courses allow the student to earn college credits at Everett Community College while still taking classes on campus. These credits can then be used in the pursuit of a post-secondary degree or certificate at Everett Community College or transferred to another institution for that purpose. Courses that offer CTE Dual Credit are noted in the CTE program sections in this handbook.

INDUSTRY RECOGNIZED CREDENTIALS

Industry Recognized Credentials (IRC's) is a verification of a person's qualifications or competence in a particular industry. Industry-recognized credentials are valued in the labor market and are a validation of knowledge and skill. They can take many forms, including certifications, certificates, and licenses. Many of our CTE Courses offer students the opportunity to earn these credentials as part of the class and are noted in the CTE Program Sections of this handbook. Along with this, many of our CTE programs assist students in developing skills, so they can earn these credentials at a post-secondary training program.

CAREER & TECHNICAL STUDENT LEADERSHIP

Career and Technical Student Organizations (CTSO's) are recognized as integral to the career and technical education program. CTSO's provide a unique program of career and leadership development, motivation and recognition for middle and high school students enrolled in career and technical programs. CTSO's are not "clubs" to which only a few career and technical students belong. Rather, a CTSO is a powerful instructional tool that works best when integrated into the career and technical curriculum and classroom by a career and technical instructor who is committed to the development of the total person, career and technical educators recognize the importance of providing students with job and career-related training that complements the job-specific skills needed for entry into a particular field. Our CTE Programs offer the following CTSO's. Please check with your instructor to learn more about the opportunities available to you.



FIND YOUR PATH

CAREER CLUSTER OF INTEREST	SUGGESTED PROGRAMS OF STUDY OFFERED
 Agriculture, Food & Natural Resources <small>CareerClusters® PATHWAYS TO COLLEGE & CAREER READINESS</small>	AGRICULTURE & APPLIED SCIENCE PROGRAM SKILLED AND TECHNICAL SCIENCE PROGRAM
 Architecture & Construction <small>CareerClusters® PATHWAYS TO COLLEGE & CAREER READINESS</small>	SKILLED AND TECHNICAL SCIENCE PROGRAM STEM ENGINEERING & DESIGN PROGRAM
 Business Management & Administration <small>CareerClusters® PATHWAYS TO COLLEGE & CAREER READINESS</small>	BUSINESS & MARKETING PROGRAM ARTS, A/V TECHNOLOGY, & COMMUNICATIONS PROGRAM
 Education & Training <small>CareerClusters® PATHWAYS TO COLLEGE & CAREER READINESS</small>	CAREERS IN EDUCATION PROGRAM ARTS, A/V TECHNOLOGY, & COMMUNICATIONS PROGRAM
 Finance <small>CareerClusters® PATHWAYS TO COLLEGE & CAREER READINESS</small>	BUSINESS & MARKETING PROGRAM INFORMATION TECHNOLOGY PROGRAM
 Government & Public Administration <small>CareerClusters® PATHWAYS TO COLLEGE & CAREER READINESS</small>	BUSINESS & MARKETING PROGRAM INFORMATION TECHNOLOGY PROGRAM
 Hospitality & Tourism <small>CareerClusters® PATHWAYS TO COLLEGE & CAREER READINESS</small>	CULINARY ARTS PROGRAM BUSINESS & MARKETING PROGRAM
 Human Services <small>CareerClusters® PATHWAYS TO COLLEGE & CAREER READINESS</small>	AMERICAN SIGN LANGUAGE PROGRAM BUSINESS & MARKETING PROGRAM
 Health Science <small>CareerClusters® PATHWAYS TO COLLEGE & CAREER READINESS</small>	HEALTH SCIENCES PROGRAM AGRICULTURE & APPLIED SCIENCES PROGRAM
 Information Technology <small>CareerClusters® PATHWAYS TO COLLEGE & CAREER READINESS</small>	INFORMATION TECHNOLOGY PROGRAM ARTS, A/V TECHNOLOGY, & COMMUNICATIONS PROGRAM
 Law, Public Safety, Corrections & Security <small>CareerClusters® PATHWAYS TO COLLEGE & CAREER READINESS</small>	FIRE SERVICE PROGRAM BUSINESS & MARKETING PROGRAM
 Manufacturing <small>CareerClusters® PATHWAYS TO COLLEGE & CAREER READINESS</small>	STEM ENGINEERING & DESIGN PROGRAM SKILLED AND TECHNICAL SCIENCE PROGRAM
 Marketing <small>CareerClusters® PATHWAYS TO COLLEGE & CAREER READINESS</small>	BUSINESS & MARKETING PROGRAM ARTS, A/V TECHNOLOGY, & COMMUNICATIONS PROGRAM
 Science, Technology, Engineering & Mathematics <small>CareerClusters® PATHWAYS TO COLLEGE & CAREER READINESS</small>	STEM ENGINEERING & DESIGN PROGRAM SKILLED AND TECHNICAL SCIENCE PROGRAM
 Transportation, Distribution & Logistics <small>CareerClusters® PATHWAYS TO COLLEGE & CAREER READINESS</small>	STEM ENGINEERING & DESIGN PROGRAM SKILLED AND TECHNICAL SCIENCE PROGRAM



AGRICULTURE & APPLIED SCIENCE

Agriculture Education courses at Stanwood High School provide students with the opportunity to explore and develop skills used in many industries. Through hands on, application-based instruction these courses allow students to learn in an environment that closely resembles the world of work. Agriculture Education is not just about farming. We offer courses in Agriculture Science (Applied Science), Horticulture, Animal & Veterinary Science, Natural Resources, and Mechanical Technology (welding, machining, small gas engines, etc).



PATHWAY COURSES	GRADE	LENGTH	EQUIVALENCY/ REQUIREMENT MET	COLLEGE CREDIT	INDUSTRY CERT.
Science Explorations	9	2 Semester	Lab Science		
ANIMAL SCIENCE PATHWAY:					
Animal Science	10-12	1 Year	Lab Science/ Biology		
Veterinary Science	10-12	1 Year	Lab Science		
PLANT SCIENCE PATHWAY:					
Horticulture	10-12	1 Year	Lab Science/ Biology		
Floriculture & Greenhouse Production	11-12	1 Year	Fine Arts		
Landscape & Nursery Production	11-12	1 Year	Lab Science		
NATURAL RESOURCES PATHWAY					
Natural Resources	10-12	1 Year	Lab Science/ Biology		
Natural Resources II	10-12	1 Year	Lab Science		
Supervised Agricultural Experience	9-12	1 Year			

POST-SECONDARY PATHWAYS

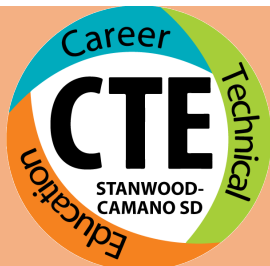
APPRENTICESHIPS CERTIFICATES/ COURSES	TWO YEAR DEGREES	FOUR YEAR DEGREES
SCHOOLS/ PROGRAMS: <ul style="list-style-type: none"> • WA State Apprenticeship Programs • Apprenticeship.Gov • Career Bridge Apprenticeship List • Veterinary Assistant Cert 	SCHOOLS: <ul style="list-style-type: none"> • Skagit Valley College • Everett Community College • Bellingham Technical College • Walla Walla Community College • Pima Medical Institute 	SCHOOLS: <ul style="list-style-type: none"> • Washington State University • Western Washington University • Central Washington University • Eastern Washington University • University of Washington
SAMPLE JOBS: <ul style="list-style-type: none"> • Veterinary Assistant • Kennel Worker • Groomer • Farmer • Horticulturist • Nursery/ Greenhouse Worker • Fisher 	SAMPLE JOBS: <ul style="list-style-type: none"> • Veterinary Technician • Wildlife Conservationist • Laboratory Technician • Civil Engineering Tech • Butcher • Winemaker/ Brew master • Park Ranger 	SAMPLE JOBS: <ul style="list-style-type: none"> • Veterinarian • Pharmaceutical Sales • Biologist • Landscape Design/ Architect • Agronomist • Forester • Environmental Engineer

Additional Pathway Information Available at:

- Washington Career Bridge, www.careerbridge.wa.gov
- Career Clusters, www.careertech.org/career-clusters
- Xello, <https://xello.world>

The Following Stanwood HS Courses support exploration & development in all pathways:

- Career Choices
- Microsoft Academy
- Worksite Learning
- Business English



AMERICAN SIGN LANGUAGE (ASL) INTERPRETATION



PATHWAY COURSES	GRADE	LENGTH	EQUIVALENCY/ REQUIREMENT MET	COLLEGE CREDIT	INDUSTRY CERT.
American Sign Language 1	9-12	1-Year	World Language		
American Sign Language 2	9-12	1-Year	World Language		
American Sign Language 2	9-12	1-Year	World Language		

POST-SECONDARY PATHWAYS

APPRENTICESHIPS CERTIFICATES/ COURSES	TWO YEAR DEGREES	FOUR YEAR DEGREES
SCHOOLS/ PROGRAMS: <ul style="list-style-type: none"> • WA State Apprenticeship Programs • Apprenticeship.Gov • Career Bridge Apprenticeship List 	SCHOOLS: <ul style="list-style-type: none"> • Everett Community College • Edmonds Community College • Skagit Valley College • South Seattle Community College 	SCHOOLS: <ul style="list-style-type: none"> • Central Washington University • Eastern Washington University • University of Washington
SAMPLE JOBS: <ul style="list-style-type: none"> • 	SAMPLE JOBS: <ul style="list-style-type: none"> • Sign Language Interpreter • Translator • Tour Guide 	SAMPLE JOBS: <ul style="list-style-type: none"> • Sign Language Interpreter • Translator • Tour Guide • Teacher • Speech-Language Pathologist

Additional Pathway Information Available at:

- Washington Career Bridge, www.careerbridge.wa.gov
- Career Clusters, www.careertech.org/career-clusters
- Xello, <https://xello.world>

The Following Stanwood HS Courses support exploration & development in all pathways:

- Career Choices
- Microsoft Academy
- Worksite Learning
- Business English



BUSINESS, MARKETING, TECHNOLOGY, & VISUAL COMMUNICATIONS PROGRAM

ARTS, A/V TECH AND COMMUNICATIONS PATHWAY



PATHWAY COURSES	GRADE	LENGTH	EQUIVALENCY/ REQUIREMENT MET	COLLEGE CREDIT	INDUSTRY CERT.
Computers (7 & 8) *Offered at Port Susan Middle School	7-8	1 Semester			
Digital Effects *Offered at Port Susan Middle School	7-8	1 Semester			
MS Multimedia *Offered at Stanwood Middle School	7-8	1 Semester			
MS Web Design *Offered at Stanwood Middle School	7-8	1 Semester			
Digital Design 1 & 2	9-12	2 Semesters	Fine Arts		Yes
Multimedia 1	9-12	1 Year	Fine Arts		Yes
Multimedia 2	10-12	1 Year	Fine Arts		Yes
Microsoft Academy	9-12	1 Year			Yes
Photography	9-12	1 Year	Fine Arts		Yes
Photography 2	10-12	1 Year	Fine Arts		Yes
Yearbook	10-12	1 Year	Fine Arts		Yes
Web Page Design	9-12	1 Year	Fine Arts		Yes

POST-SECONDARY PATHWAYS

APPRENTICESHIPS CERTIFICATES/ COURSES	TWO YEAR DEGREES	FOUR YEAR DEGREES
SCHOOLS/ PROGRAMS: <ul style="list-style-type: none"> • WA State Apprenticeship Programs • Apprenticeship.Gov • Career Bridge Apprenticeship List 	SCHOOLS: <ul style="list-style-type: none"> • Everett Community College • Edmonds Community College • Skagit Valley School • Bellingham Technical College • Bellevue College 	SCHOOLS: <ul style="list-style-type: none"> • Central Washington University • Eastern Washington University • University of Washington • Western Washington University • Washington State University
SAMPLE JOBS: <ul style="list-style-type: none"> • Web Developer • Cloud Support Specialist • Certified Video Engineer • Sign Maker • Special Effects Technician • Film/ TV Crew • Photographer • DJ 	SAMPLE JOBS: <ul style="list-style-type: none"> • Film & Video Editor • Audio & Video Technician • Graphic Design • Videographer • Lighting Technician • Technical Writer • Commercial Photographer • Digital Branding/ Marketing 	SAMPLE JOBS: <ul style="list-style-type: none"> • Graphic Designer • Producer • Multimedia Artist • Animator • UX Designer • Augmented Reality Designer • Game & Graphic Designer • Art Director

Additional Pathway Information Available at:

- Washington Career Bridge, www.careerbridge.wa.gov
- Career Clusters, www.careertech.org/career-clusters
- Xello, <https://xello.world>

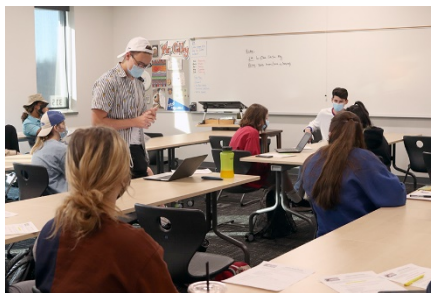
The Following Stanwood HS Courses support exploration & development in all pathways:

- Career Choices
- Microsoft Academy
- Worksite Learning
- Business English



BUSINESS, MARKETING, TECHNOLOGY, & VISUAL COMMUNICATIONS PROGRAM

BUSINESS & MARKETING PATHWAY



PATHWAY COURSES	GRADE	LENGTH	EQUIVALENCY/ REQUIREMENT MET	COLLEGE CREDIT	INDUSTRY CERT.
Intro to Business & Entrepreneurship	9-12	1 Semester		Yes	
Intro to Marketing	9-12	1 Semester			
Law & Justice 1	9-12	1 Semester			
Law & Justice 2	9-12	1 Semester			
Personal Finance	10-12	1 Year	3 rd Year Math	Yes	
Accounting 1	9-12	1 Year	3 rd Year Math	Yes	
Student Leadership 1	9-12	1 Year			
Student Leadership 2	9-12	1 Year			
Student Leadership 3	11-12	1 Year			
Student Leadership 4	12	1 Year			
Business English	11-12	1 Year	Sr. English		
Microsoft Academy	9-12	1 Year			Yes

POST-SECONDARY PATHWAYS

APPRENTICESHIPS CERTIFICATES/ COURSES	TWO YEAR DEGREES	FOUR YEAR DEGREES
SCHOOLS/ PROGRAMS: <ul style="list-style-type: none">• WA State Apprenticeship Programs• Apprenticeship.Gov• Career Bridge Apprenticeship List	SCHOOLS: <ul style="list-style-type: none">• Everett Community College• Edmonds Community College• Skagit Valley School• Bellingham Technical College	SCHOOLS: <ul style="list-style-type: none">• Central Washington University• Eastern Washington University• University of Washington• Western Washington University• Washington State University
SAMPLE JOBS: <ul style="list-style-type: none">• Web Developer• Secretary/ Receptionist• Office Manager• Retail Salesperson• Office Assistant	SAMPLE JOBS: <ul style="list-style-type: none">• Customer Service Rep• Sales Representative• Paralegal• Bookkeeper• Medical Receptionist/ Billing	SAMPLE JOBS: <ul style="list-style-type: none">• Accountant• Marketing Manager• Financial Analyst• Financial Planner• Retail Buyer• Human Resources Manager• Controller• Entrepreneur

Additional Pathway Information Available at:

- Washington Career Bridge, www.careerbridge.wa.gov
- Career Clusters, www.careertech.org/career-clusters
- Xello, <https://xello.world>

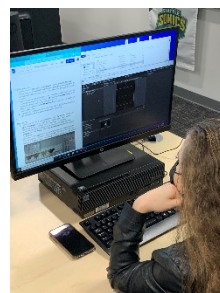
The Following Stanwood HS Courses support exploration & development in all pathways:

- Career Choices
- Microsoft Academy
- Worksite Learning
- Business English



BUSINESS, MARKETING, TECHNOLOGY, & VISUAL COMMUNICATIONS PROGRAM

INFORMATION TECHNOLOGY PATHWAY



PATHWAY COURSES	GRADE	LENGTH	EQUIVALENCY/ REQUIREMENT MET	COLLEGE CREDIT	INDUSTRY CERT.
Computers (7 & 8) *Offered at Port Susan Middle School	7-8	1 Semester			
Digital Effects *Offered at Port Susan Middle School	7-8	1 Semester			
MS Multimedia *Offered at Stanwood Middle School	7-8	1 Semester			
MS Web Design *Offered at Stanwood Middle School	7-8	1 Semester			
Computer Programming	9-12	1 Semester			Yes
Game Design	9-12	1 Semester			Yes
Advanced Computer Programming	10-12	1 Year	Fine Arts		Yes
Web Page Design	9-12	1 Year	Fine Arts		Yes
Technology Assistant Internship	11-12	1 Year			
Microsoft Academy	9-12	1 Year			Yes

POST-SECONDARY PATHWAYS

APPRENTICESHIPS CERTIFICATES/ COURSES	TWO YEAR DEGREES	FOUR YEAR DEGREES
SCHOOLS/ PROGRAMS: <ul style="list-style-type: none"> • WA State Apprenticeship Programs • Apprenticeship.Gov • Career Bridge Apprenticeship List 	SCHOOLS: <ul style="list-style-type: none"> • Everett Community College • Edmonds Community College • Skagit Valley School • Bellingham Technical College • Bellevue College 	SCHOOLS: <ul style="list-style-type: none"> • Central Washington University • Eastern Washington University • University of Washington • Western Washington University • Washington State University
SAMPLE JOBS: <ul style="list-style-type: none"> • Software Developer • Web Developer • Network Security • Web Administrator • IT Support • Office Repair 	SAMPLE JOBS: <ul style="list-style-type: none"> • Information Security Analyst • Computer Programmer • Web Developer • Digital Media Specialist • Technical Writer • Electronics Repair • IT Support Specialist 	SAMPLE JOBS: <ul style="list-style-type: none"> • Software Engineer • Computer & Information Research Scientist • Database Administrator • Video Game Developer • Electronics Engineer • Digital Animator • Computer Scientist

Additional Pathway Information Available at:

- Washington Career Bridge, www.careerbridge.wa.gov
- Career Clusters, www.careertech.org/career-clusters
- Xello, <https://xello.world>

The Following Stanwood HS Courses support exploration & development in all pathways:

- Career Choices
- Microsoft Academy
- Worksite Learning
- Business English



FAMILY & CONSUMER SCIENCE

CULINARY ARTS PATHWAY



PATHWAY COURSES	GRADE	LENGTH	EQUIVALENCY/ REQUIREMENT MET	COLLEGE CREDIT	INDUSTRY CERT.
Home Ec *Offered at Port Susan Middle School	7-8	1 Semester			
Family & Consumer Science *Offered at Stanwood Middle School	7-8	1 Semester			
Intro to Culinary Arts	9-12	1 Year			Yes
Advanced Culinary Arts	10-12	1 Year			Yes
Culinary Arts 3	11-12	1 Year	3 rd Year Science		Yes

POST-SECONDARY PATHWAYS

APPRENTICESHIPS CERTIFICATES/ COURSES	TWO YEAR DEGREES	FOUR YEAR DEGREES
SCHOOLS/ PROGRAMS: <ul style="list-style-type: none"> • WA State Apprenticeship Programs • Apprenticeship.Gov • Career Bridge Apprenticeship List 	SCHOOLS: <ul style="list-style-type: none"> • Everett Community College • Edmonds Community College • Skagit Valley School • Bellingham Technical College • Bellevue College 	SCHOOLS: <ul style="list-style-type: none"> • Central Washington University • Eastern Washington University • University of Washington • Western Washington University • Washington State University
SAMPLE JOBS: <ul style="list-style-type: none"> • Food Preparation Worker • Apprentice Meat Cutter • Wait Staff • Cook • Host • Kitchen Staff • Dish Maintenance Operator 	SAMPLE JOBS: <ul style="list-style-type: none"> • Chef • Baker • Butcher • Restaurant Manager • Concierge • Expeditior 	SAMPLE JOBS: <ul style="list-style-type: none"> • Dietician • CTE Teacher • Caterer • Brewmaster/ Winemaker • Event Planner • Hotel Manager • Kitchen Manager

Additional Pathway Information Available at:

- Washington Career Bridge, www.careerbridge.wa.gov
- Career Clusters, www.careertech.org/career-clusters

The following courses support exploration & development:

- Career Choices
- Microsoft Academy
- Worksite Learning
- Business English



EDUCATION PATHWAY

PATHWAY COURSES	GRADE	LENGTH	EQUIVALENCY/ REQUIREMENT MET	COLLEGE CREDIT	INDUSTRY CERT.
Careers In Education	11-12	1 Year			Yes
Careers In Education 2	11-12	1 Year			Yes
Careers In Education Practicum	11-12	1 Year			

POST-SECONDARY PATHWAYS

APPRENTICESHIPS CERTIFICATES/ COURSES	TWO YEAR DEGREES	FOUR YEAR DEGREES
SCHOOLS/ PROGRAMS: <ul style="list-style-type: none"> • WA State Apprenticeship Programs • Apprenticeship.Gov • Career Bridge Apprenticeship List 	SCHOOLS: <ul style="list-style-type: none"> • Everett Community College • Edmonds Community College • Skagit Valley College • Whatcom Community College 	SCHOOLS: <ul style="list-style-type: none"> • Central Washington University • Eastern Washington University • University of Washington • Washington State University • Western Washington University
SAMPLE JOBS: <ul style="list-style-type: none"> • Para Educator • Teacher Assistant • Coach • Trainer 	SAMPLE JOBS: <ul style="list-style-type: none"> • Para Educator • Tutor • Dance/ Music Instructor • Coach • Computer Trainer • Sports Instructor • Library Technician 	SAMPLE JOBS: <ul style="list-style-type: none"> • Teacher (Elementary, Secondary, Post-Secondary) • CTE Teacher • Librarian • School Counselor or Psychologist • School Administrator • Speech-Language Pathologist

Additional Pathway Information Available at:

- Washington Career Bridge, www.careerbridge.wa.gov
- Career Clusters, www.careertech.org/career-clusters
- Xello, <https://xello.world>

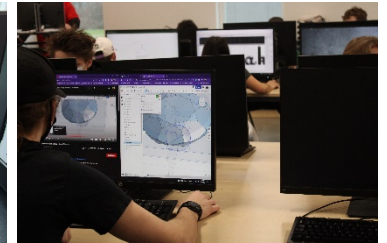
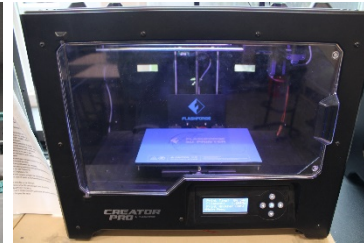
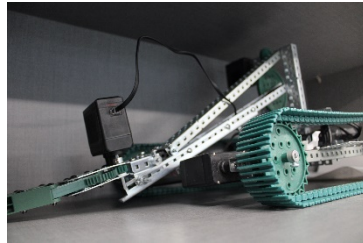
The Following Stanwood HS Courses support exploration & development in all pathways:

- Career Choices
- Microsoft Academy
- Worksite Learning
- Business English



ENGINEERING, DESIGN, & FABRICATION

This program provides students with the opportunity to explore careers and develop skills in the areas of Architecture, Engineering, Design, Manufacturing, and Robotics. Using state of the art software and equipment students will design, build, and test a variety of projects to help them develop industry recognized skills.



PATHWAY COURSES	GRADE	LENGTH	EQUIVALENCY/ REQUIREMENT MET	COLLEGE CREDIT	INDUSTRY CERT.
Applied Tech *Offered at Port Susan Middle School	7-8	1 Semester			
Robotics *Offered at Port Susan Middle School	7-8	1 Semester			
Woodworking & Design *Offered at Stanwood Middle School	7-8	1 Semester			
Engineering Design 1	9-12	1 Year	Fine Arts	Yes	
CAD/CAM	10-12	1 Year	3 rd Year Math	Yes	Solidworks
Robotics	11-12	1 Year	3 rd Year Science		
Engineering Design 2	11-12	1 Year	Fine Arts	Yes	

POST-SECONDARY PATHWAYS

APPRENTICESHIPS CERTIFICATES/ COURSES	TWO YEAR DEGREES	FOUR YEAR DEGREES
SCHOOLS/ PROGRAMS: <ul style="list-style-type: none"> WA State Apprenticeship Programs Apprenticeship.Gov Career Bridge Apprenticeship List 	SCHOOLS: <ul style="list-style-type: none"> Everett Community College Edmonds Community College Skagit Valley School Bellingham Technical College Lake Washington Institute of Technology 	SCHOOLS: <ul style="list-style-type: none"> Central Washington University Eastern Washington University University of Washington Western Washington University Washington State University
SAMPLE JOBS: <ul style="list-style-type: none"> Machinist Industrial Maintenance Technician Equipment Repair Inventor Construction Worker Assembler 	SAMPLE JOBS: <ul style="list-style-type: none"> Technical Designer Manufacturing Technician Drafter CNC Tool Programmer Cost Estimator Engineering Technician Technical Sales 	SAMPLE JOBS: <ul style="list-style-type: none"> Engineer Industrial Designer CTE Teacher Manufacturing Technician Construction Manager Architect Physicist



FIRE SERVICE TRAINING

The Stanwood-Camano School District offers the Fire Service Training program in cooperation with Camano Island Fire & Rescue. This program allows students the opportunity to develop the skills necessary for a career in Fire Service, Emergency Medical/ Paramedics, and many more related occupations.



PATHWAY COURSES	GRADE	LENGTH	EQUIVALENCY/ REQUIREMENT MET	COLLEGE CREDIT	INDUSTRY CERT.
Fire Service Training 1	11-12	3 credits	3 rd Year Science/ PE	Yes	Yes
Fire Service Training 2	12	3 credits	3 rd Year Science/ PE	Yes	Yes

POST-SECONDARY PATHWAYS

APPRENTICESHIPS CERTIFICATES/ COURSES	TWO YEAR DEGREES	FOUR YEAR DEGREES
SCHOOLS/ PROGRAMS: <ul style="list-style-type: none"> • WA State Apprenticeship Programs • Apprenticeship.Gov • Career Bridge Apprenticeship List • Fire Academy • Camano Island Fire & Rescue • North County Fire 	SCHOOLS: <ul style="list-style-type: none"> • Everett Community College • Edmonds Community College • Skagit Valley School • Bellingham Technical College 	SCHOOLS: <ul style="list-style-type: none"> • Central Washington University • Eastern Washington University • University of Washington
SAMPLE JOBS: <ul style="list-style-type: none"> • Fire Fighter • Rescue Worker • Wildland Fire Fighter • Ambulance Driver 	SAMPLE JOBS: <ul style="list-style-type: none"> • Emergency Medical Technician • Fire Fighter • Hazardous Materials Responder • 911 Dispatcher • Building Inspector 	SAMPLE JOBS: <ul style="list-style-type: none"> • Paramedic • Fire Marshall • Emergency Planning Manager • Fire Inspector/ Investigator • Fire Chief • Explosives Specialist

Additional Pathway Information Available at:

- Washington Career Bridge, www.careerbridge.wa.gov
- Career Clusters, www.careertech.org/career-clusters
- Xello, <https://xello.world>

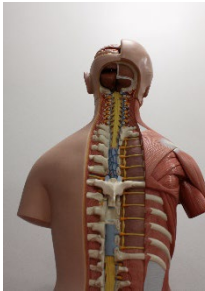
The Following Stanwood HS Courses support exploration & development in all pathways:

- Career Choices
- Microsoft Academy
- Worksite Learning
- Business English



HEALTH SCIENCES

This program is ideal for students interested in varied careers in healthcare such as Nursing, Medicine, Physical Therapy, Pharmacy, Respiratory Therapy, Diagnostic Imaging, and many others. Through hands on applications, students learn skills in Therapeutic Medicine as well as skills that translate across all health occupations. Through courses such as Medical Terminology, students gain valuable knowledge that gives them a leg up on the competition as they enter post-secondary training in the medical field.



PATHWAY COURSES	GRADE	LENGTH	EQUIVALENCY/ REQUIREMENT MET	COLLEGE CREDIT	INDUSTRY CERT.
Introduction to Health Sciences	9-12	1 Year			
Sports Medicine 2	10-12	1 Year			
Sports Medicine 2 Practicum	11-12	1 Year			
Medical Terminology	10-12	1 Year	3 rd Year Science	Yes	

POST-SECONDARY PATHWAYS

APPRENTICESHIPS CERTIFICATES/ COURSES	TWO YEAR DEGREES	FOUR YEAR DEGREES
SCHOOLS/ PROGRAMS: <ul style="list-style-type: none"> • WA State Apprenticeship Programs • Apprenticeship.Gov • Career Bridge Apprenticeship List 	SCHOOLS: <ul style="list-style-type: none"> • Everett Community College • Edmonds Community College • Skagit Valley School • Bellingham Technical College • Bellevue College 	SCHOOLS: <ul style="list-style-type: none"> • Central Washington University • Eastern Washington University • University of Washington • Western Washington University • Washington State University
SAMPLE JOBS: <ul style="list-style-type: none"> • Medical Assistant • Fitness Instructor • Medical Secretary • Personal Trainer • Personal Care Aide • Dental Assistant 	SAMPLE JOBS: <ul style="list-style-type: none"> • Medical Assistant • Dental Hygienist • Pharmacy Technician • Physical Therapy Assistant • Medical Receptionist/ Billing • Lab Technician • Massage Therapist 	SAMPLE JOBS: <ul style="list-style-type: none"> • Athletic Trainer • Biomedical Engineer • Doctor • Nurse • Counselor • Pharmacist • Researcher

Additional Pathway Information Available at:

- Washington Career Bridge, www.careerbridge.wa.gov
- Career Clusters, www.careertech.org/career-clusters
- Xello, <https://xello.world>

The Following Stanwood HS Courses support exploration & development in all pathways:

- Career Choices
- Microsoft Academy
- Worksite Learning
- Business English



SKILLED & TECHNICAL SCIENCES PROGRAM

(AG MECHANICS/ WOODSHOP/ CONSTRUCTION/ MANUFACTURING)



PATHWAY COURSES	GRADE	LENGTH	EQUIVALENCY/ REQUIREMENT MET	COLLEGE CREDIT	INDUSTRY CERT.
Applied Tech *Offered at Port Susan Middle School	7-8	1 Semester			
Robotics *Offered at Port Susan Middle School	7-8	1 Semester			
Woodworking & Design *Offered at Stanwood Middle School	7-8	1 Year			
Engineering Design 1	9-12	1 Year	Fine Arts	Yes	
Beginning Woodworking	9	1 Year			
Advanced Woodworking	10-12	1 Year			
Mechanical Technology 1	10-12	1 Year		Yes	
Mechanical Technology 2	11-12	1 Year		Yes	
Construction Geometry	10-12	1 Year	Geometry		
CAD/ CAM	10-12	1 Year	3 rd Year Math	Yes	Yes
CORE Plus 1 *Offered at Lincoln Hill High School	9-12	1 Year	3 rd Year Math/ Science		Yes
CORE Plus 2 *Offered at Lincoln Hill High School	9-12	1 Year	3 rd Year Math/ Science		Yes
RAP Architecture & Construction *Offsite Program at Marysville Pilchuck	11-12	1 Year	3 rd Year Math & Science	Yes	Yes
RAP Building Trade *Offsite Program at Marysville Pilchuck	11-12	1 Year	3 rd Year Math & Science	Yes	Yes

POST-SECONDARY PATHWAYS

APPRENTICESHIPS CERTIFICATES/ COURSES	TWO YEAR DEGREES	FOUR YEAR DEGREES
SCHOOLS/ PROGRAMS: <ul style="list-style-type: none">• WA State Apprenticeship Programs• Apprenticeship.Gov• Career Bridge Apprenticeship List	SCHOOLS: <ul style="list-style-type: none">• Everett Community College• Edmonds Community College• Skagit Valley School• Bellingham Technical College• Lake Washington Institute of Technology	SCHOOLS: <ul style="list-style-type: none">• Central Washington University• Eastern Washington University• University of Washington• Western Washington University• Washington State University
SAMPLE JOBS: <ul style="list-style-type: none">• Carpenter• Equipment Operator• Iron Worker• CNC Operator• Machinist• Assembler• Welder	SAMPLE JOBS: <ul style="list-style-type: none">• Equipment Operator• CNC Programmer• Carpenter• Electrician• Technician	SAMPLE JOBS: <ul style="list-style-type: none">• Construction Manager• Manufacturing Engineer• Project Manager• Technician• Architect• CTE Teacher

Additional Pathway Information Available at:

- Washington Career Bridge, www.careerbridge.wa.gov
- Career Clusters, www.careertech.org/career-clusters
- Xello, <https://xello.world>

The Following Stanwood HS Courses support exploration & development in all pathways:

- Career Choices
- Microsoft Academy
- Worksite Learning
- Business English